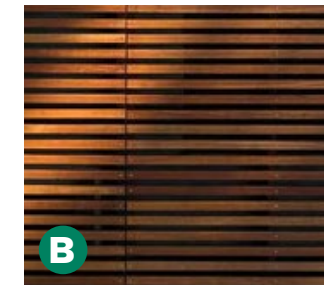
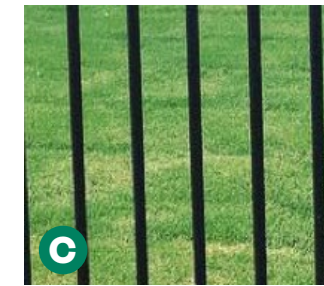


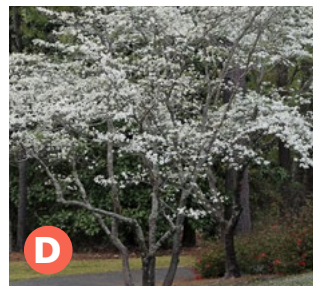
**A**  
Concrete Pavers on pedestal system



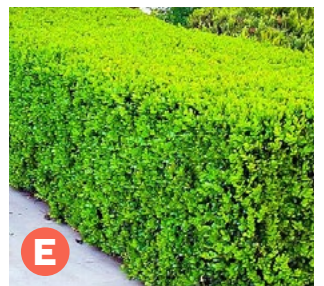
**B**  
Ipe Wood Benches



**C**  
Metal Railings and Guardrail



**D**  
Service Berry  
*Amelanchier canadensis*



**E**  
Boxwood



**F**  
Blue Grama Grass  
*Bouteloua gracilis 'Blonde'*



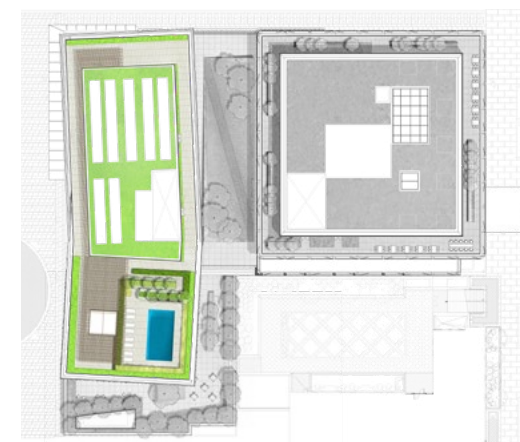
**F**  
Mexican Feather Grass  
*Nasella tenuissima*



**G**  
Sedum / Perennial mix

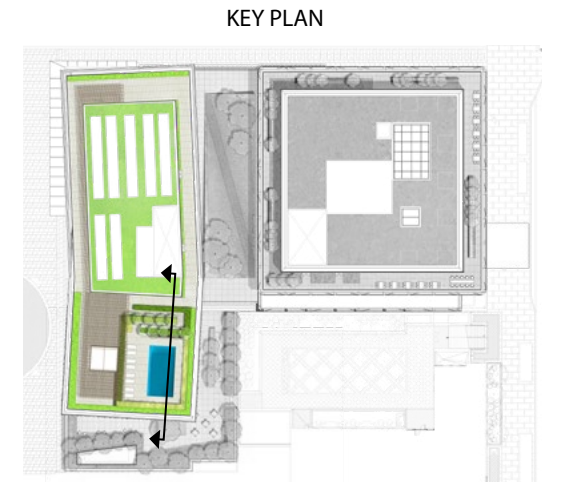
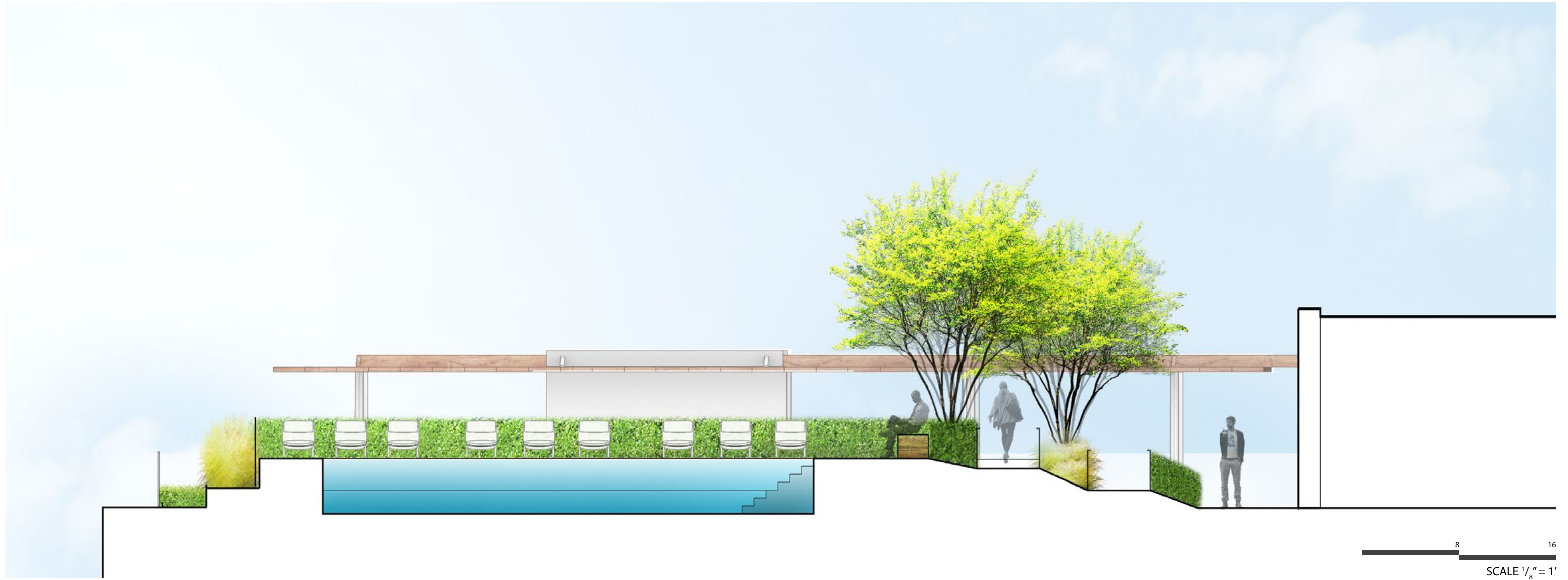
NOTE: THE DESIGN AND LAYOUT OF THE ROOFTOP AND OUTDOOR AMENITY AREAS ARE PRELIMINARY AND ARE SHOWN FOR ILLUSTRATIVE PURPOSES ONLY. FINAL LAYOUTS AND DESIGN, INCLUDING THE AMENITIES PROVIDED AS WELL AS THE LOCATION AND SIZE OF THE ROOFTOP POOL MAY VARY

KEY PLAN



## Materials and Planting- Residential Roof

PUD Stage II Filing: Capitol Crossing III LLC and Capitol Crossing IV LLC: Square 566, Lots 861-862 (part of Record Lot 50)



## Landscape Elevation- Residential Roof

PUD Stage II Filing: Capitol Crossing III LLC and Capitol Crossing IV LLC: Square 566, Lots 861-862 (part of Record Lot 50)



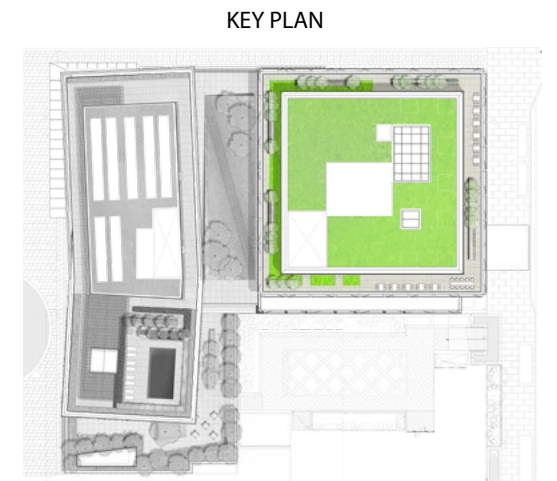
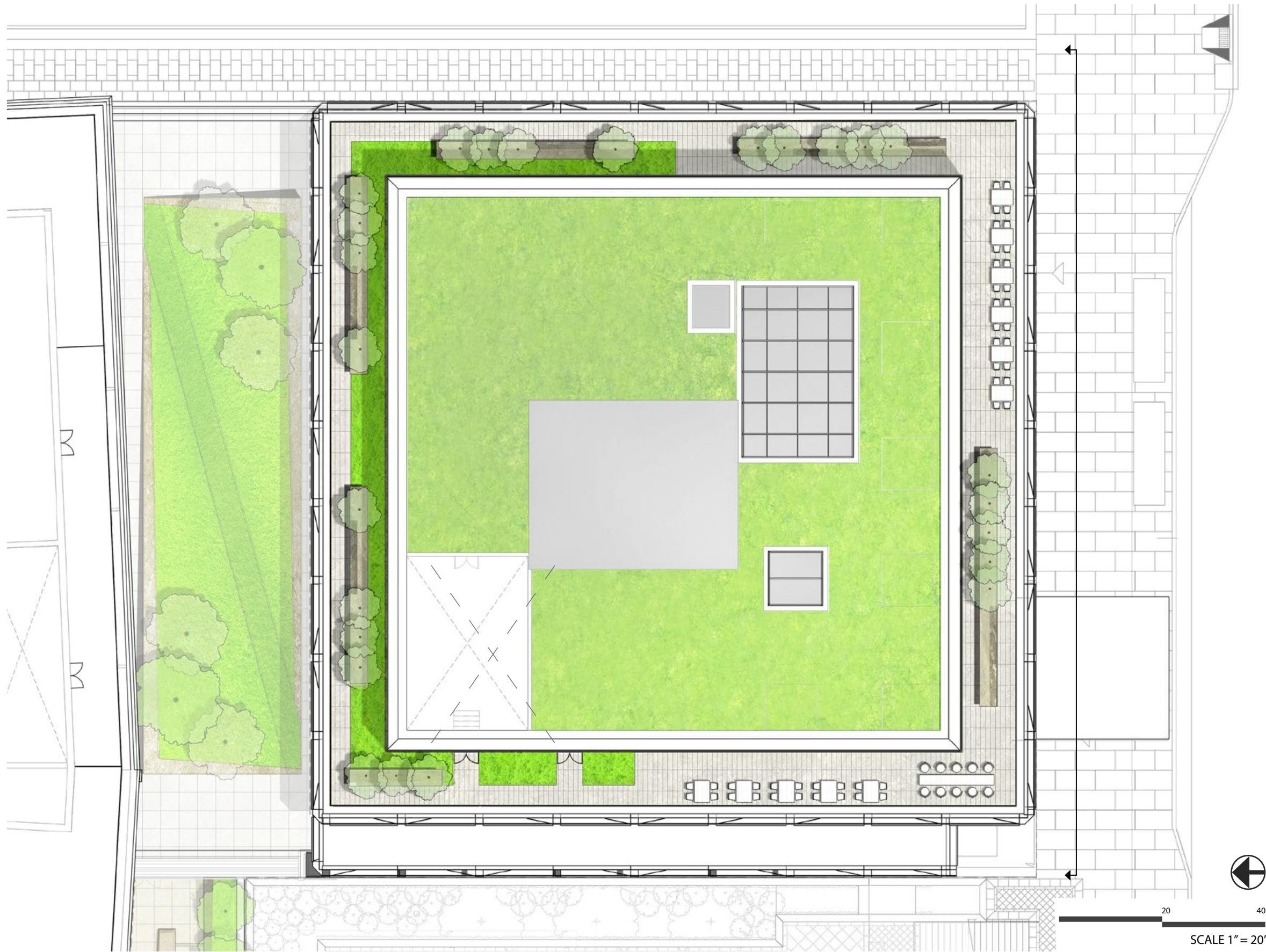
## Landscape View- Residential Roof

PUD Stage II Filing: Capitol Crossing III LLC and Capitol Crossing IV LLC: Square 566, Lots 861-862 (part of Record Lot 50)



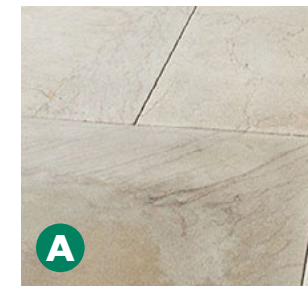
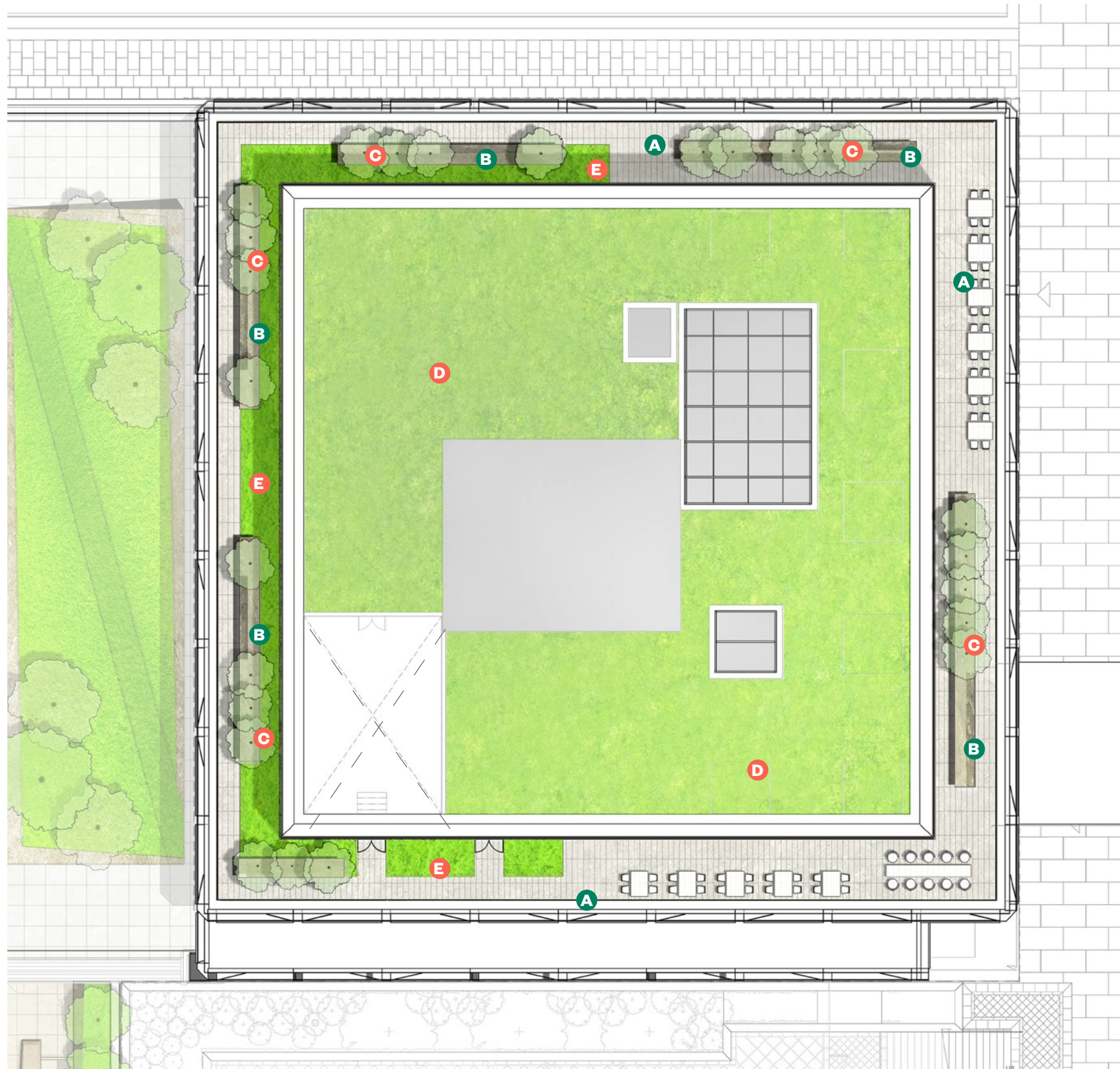
## Landscape View- Residential Roof

PUD Stage II Filing: Capitol Crossing III LLC and Capitol Crossing IV LLC: Square 566, Lots 861-862 (part of Record Lot 50)

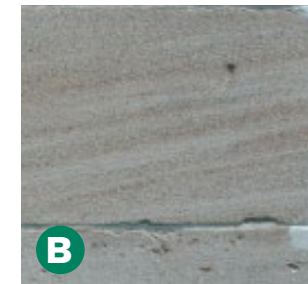


# Landscape Plan- Hotel Roof

PUD Stage II Filing: Capitol Crossing III LLC and Capitol Crossing IV LLC: Square 566, Lots 861-862 (part of Record Lot 50)



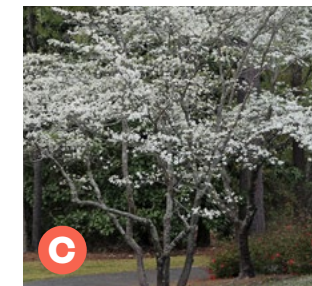
**A**  
Sandstone Pavers on  
pedestal system



**B**  
Sandstone - Honed or  
Smooth finish



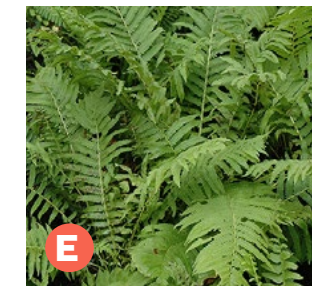
**B**  
Sandstone- Natural finish



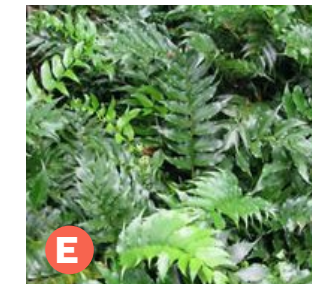
**C**  
Service Berry  
*Amelanchier canadensis*



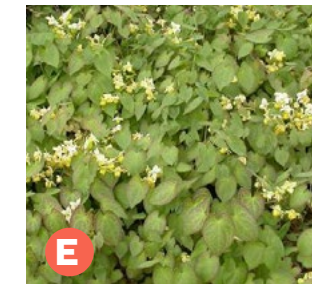
**D**  
Sedum Mix



**E**  
Christmas Fern  
*Polystichum acrostichoides*

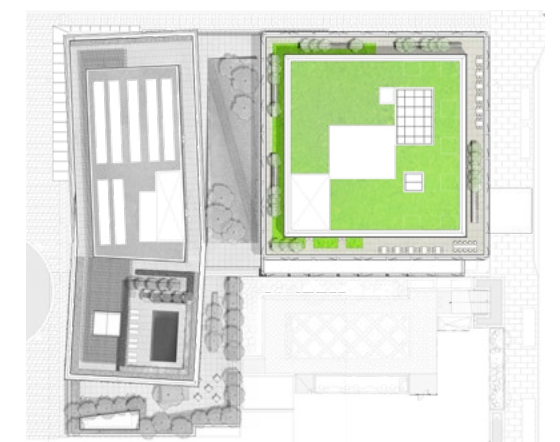


**E**  
Holly Fern  
*Cyrtomium falcatum*



**E**  
Bishops Hat  
*Epimedium × versicolor*

KEY PLAN



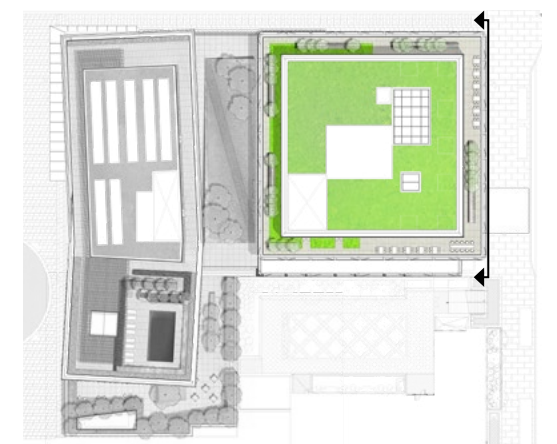
## Materials and Planting- Hotel Roof

PUD Stage II Filing: Capitol Crossing III LLC and Capitol Crossing IV LLC: Square 566, Lots 861-862 (part of Record Lot 50)



8 16  
SCALE 1/8" = 1'

KEY PLAN



# Landscape Elevation- Hotel Roof

PUD Stage II Filing: Capitol Crossing III LLC and Capitol Crossing IV LLC: Square 566, Lots 861-862 (part of Record Lot 50)



## Landscape View- Hotel Roof

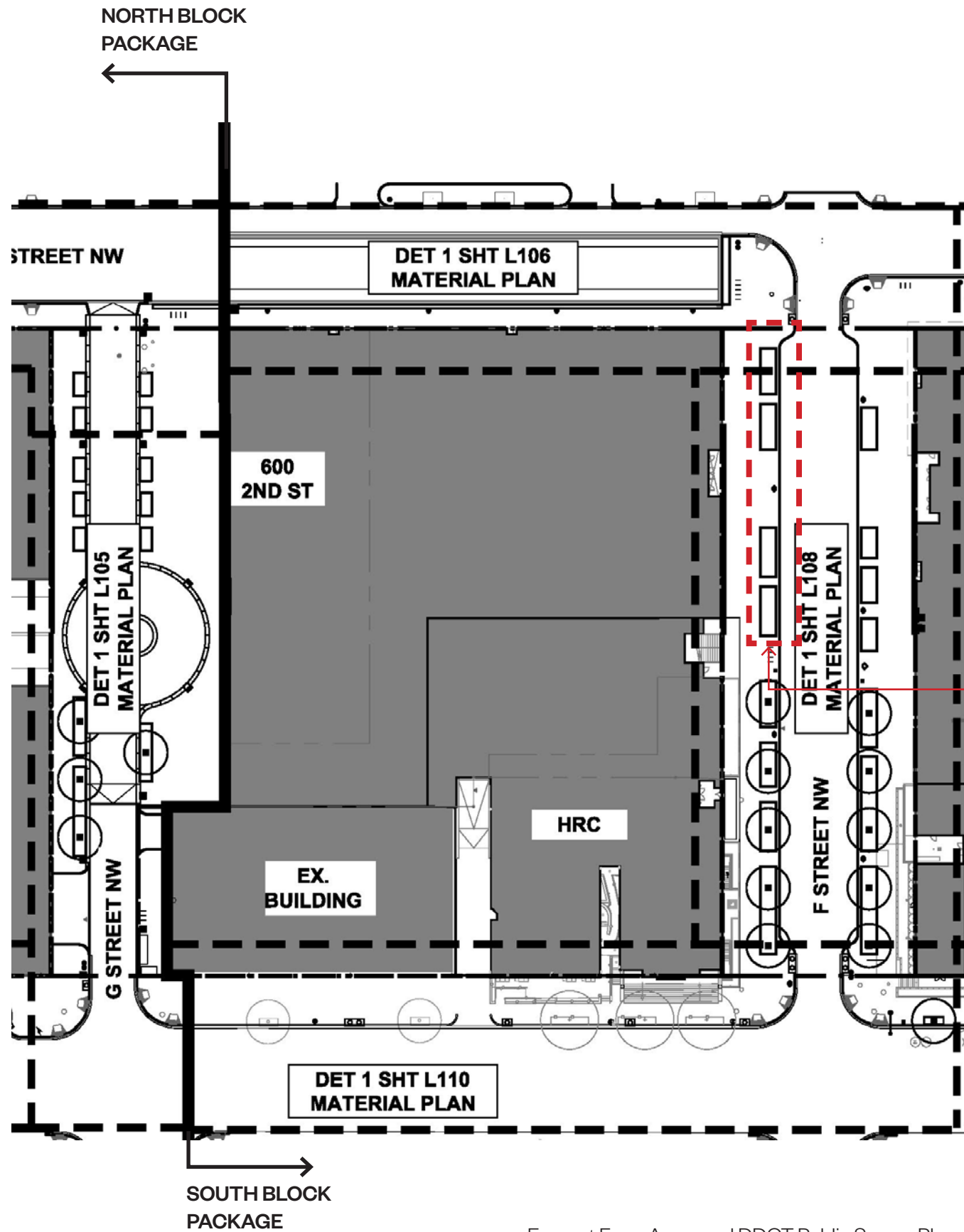
PUD Stage II Filing: Capitol Crossing III LLC and Capitol Crossing IV LLC: Square 566, Lots 861-862 (part of Record Lot 50)



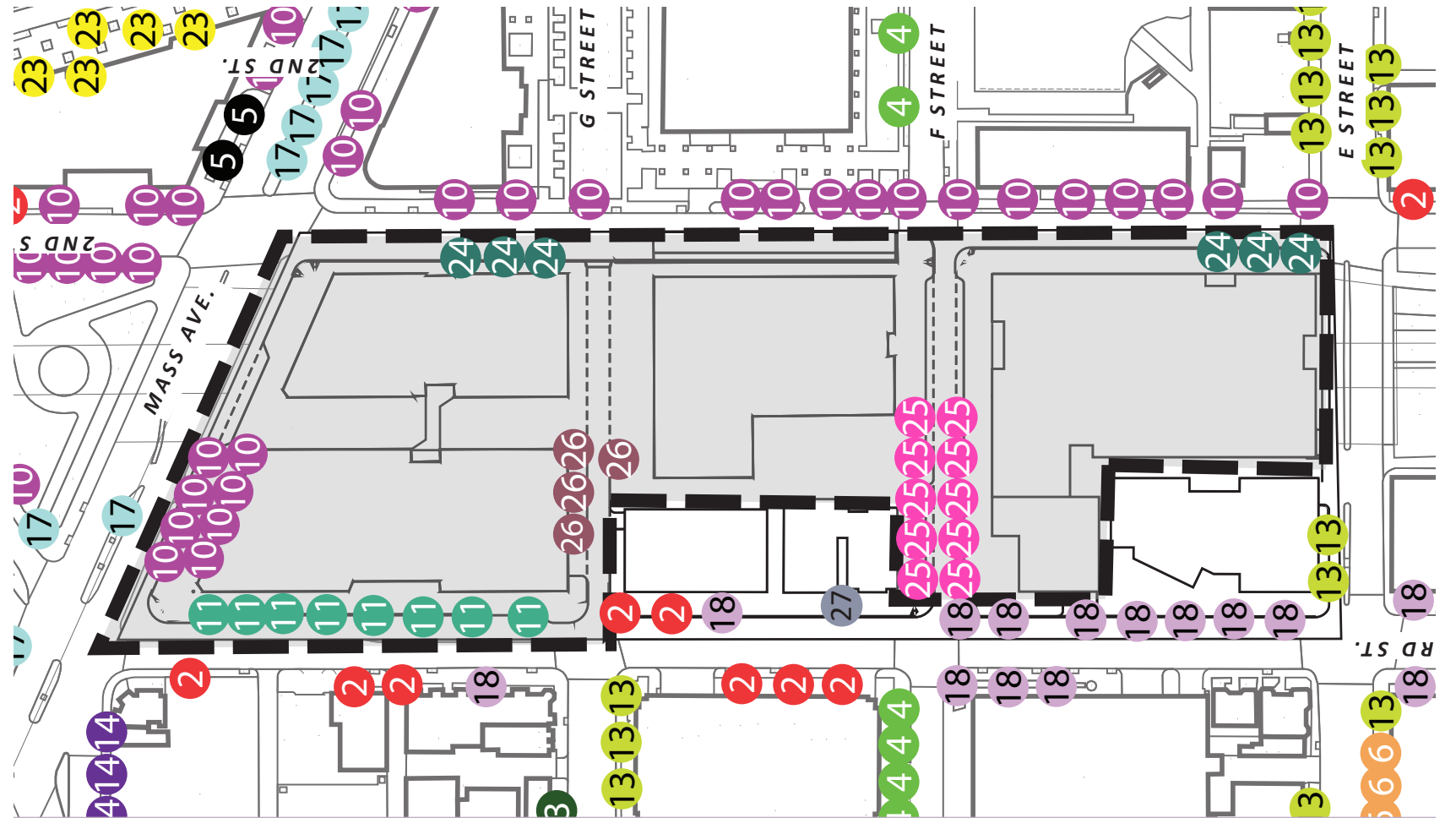


## Landscape View- Hotel Roof

PUD Stage II Filing: Capitol Crossing III LLC and Capitol Crossing IV LLC: Square 566, Lots 861-862 (part of Record Lot 50)



Excerpt From Approved DDOT Public Space Plans



Approved plans called for two sets of two planters for a total of 4 planters in front of the Commercial Building. Center Block proposal rearranges this to two planters in front of the Commercial Building to accommodate the proposed ground floor layout, canopy & layby. See sheets 1-06, 1-08, 1-11, 1-12, 1-13 and 1-14.



10 MASS AVE: LITTLE LEAF LINDEN (TILIA CORDATA "GREENSPIRE")\*\*PER DOWNTOWN STREETScape REGULATIONS



25 F STREET: MAGNOLIA 'DENUData' \*\*PLANTER OVERSTRUCTURE. WITH LOW SOIL VOLUME. TREE RECOMMENDED BY DDOT GREEN INFRASTRUCTURE STDS.



26 G STREET: JAPANESE SNOWBELL (STYRAX JAPONICUS) \*\*PLANTER OVERSTRUCTURE. WITH LOW SOIL VOLUME.TREE RECOMMENDED BY DDOT GREEN INFRASTRUCTURE STDS.

Excerpt From Approved DDOT Public Space Plans

# Landscape Approved Streetscape and Trees



2'-0"

1

1 POWDER-COATED STEEL PLANTER (COLOR T.B.D.). ALL EDGES TO BE ROUNDED PLANTER SHALL BE INSTALLED ON TOP OF PAVERS AND SHALL BE REMOVABLE.

Excerpt From Approved DDOT Public Space Plans

## Landscape Approved Planter

PUD Stage II Filing: Capitol Crossing III LLC and Capitol Crossing IV LLC: Square 566, Lots 861-862 (part of Record Lot 50)